

Buildings with character
PROJECTS

exterior

**for
people
who
create**



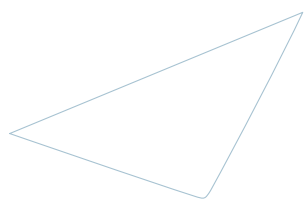
Ideas that change the world

Great art is the culmination of strong architecture, beautiful textures and inspirational creativity. There is only an idea in the beginning, which over the course of time transforms into an iconic monument.

It is the imagination which brings these impressive forms to life. Creating without boundaries is inspiring, and in this brochure, FunderMax provides you with a world of innovative decors to help create that unique monument.

Give your buildings character. Find more inspiration online at www.fundermax.in

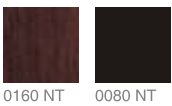
- 4** Facades
- 30** Balconies
- 34** Sunscreens
- 36** Outdoor
- 42** Scaleo/Modulo
- 48** Hexa
- 50** Authentic
- 54** Individualdecor
- 58** Products



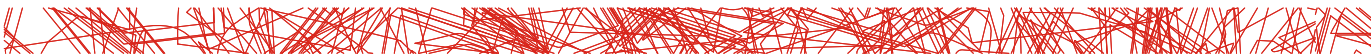
FACADES



PHOTOS: © JOHANNES HEMETSBERGER



0160 NT 0080 NT





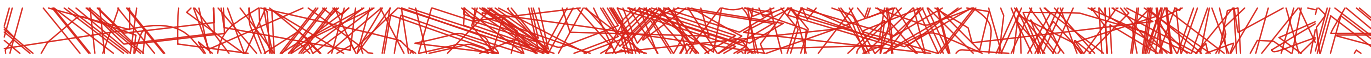
EVENT CENTRE HALLWANG

Multipurpose hall
Hallwang, Austria

Planning: Resmann & Schindlmeier
ZT GmbH



0794 NT





**CENTRE FOR BUSINESS
STARTUPS**

Office building
Baden-Baden, Germany

Planning: AID Müller, Meermann
+ Partner

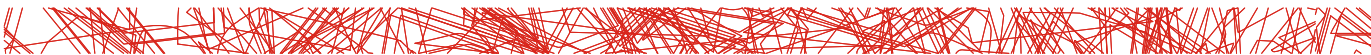
FACADES



0085 NG



0080 NG





ANTHENTIC
Office building
Langkampfen, Austria

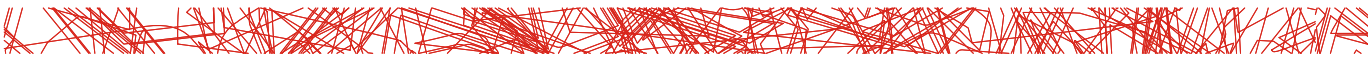
Planning: Peneder Bau GmbH

FACADES



PHOTOS: © ABSTRACT PHOTOGRAPHY INC.

- 0080 NT
- 0085 NT
- 0702 NT
- 3007 NT
- 0065 NT
- 0647 NT
- 0736 NT
- 0591 NT
- 0237 NT





**CREC ACADEMY OF AEROSPACE
AND ENGINEERING**

School building
Windsor, Connecticut, USA

Planning: Friar Associates

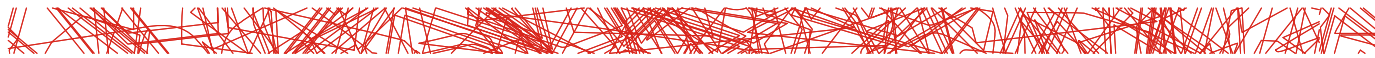
FACADES



0742 NT



0742 NG



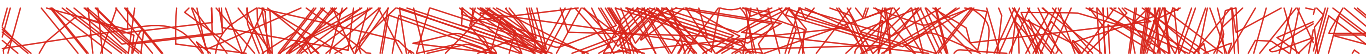


PHOTOS: © MAG. BIANCA PERFAHL, PHOTO-GRAPHICS

EUROSPAR ST. VALENTIN
Supermarket
St. Valentin, Austria

Planning: dworschak+mühlbacher
architekten zt gmbh

FACADES



PHOTOS: © THOMAS PANNETIER



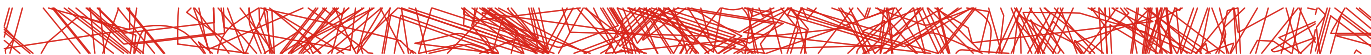
CRECHE MUNICIPALE DE TARNOS

School building
Tarnos, France

Planning: TWO ARCHITECTES



0801 NT 0801 NG



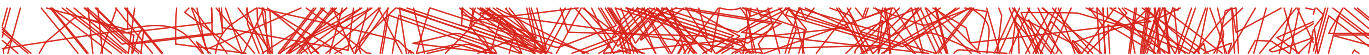


**EUROPEAN COLLEGE OF
ECONOMICS AND MANAGEMENT**

School building
Sofia, Bulgaria

Planning: Architectural Agency -DD-
arch.

FACADES





GOODWIN COLLEGE

School building
Conneticut, USA

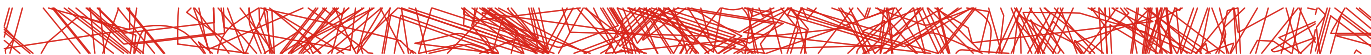
Planning: Amenta Emma Architects



FACADES



0085 NT





**INNOVATION CENTER OF ZAGREB
UNIVERSITY - BIOCENTAR**

University building
Zagreb, Croatia

Planning: Katušić Kocbek Arhitekti

FACADES



0161 NT

NAVODAYA EDUCATION TRUST

Private College
Raichur

Planning: Gayathri and Namit Architects





NARAYAN RESIDENCE

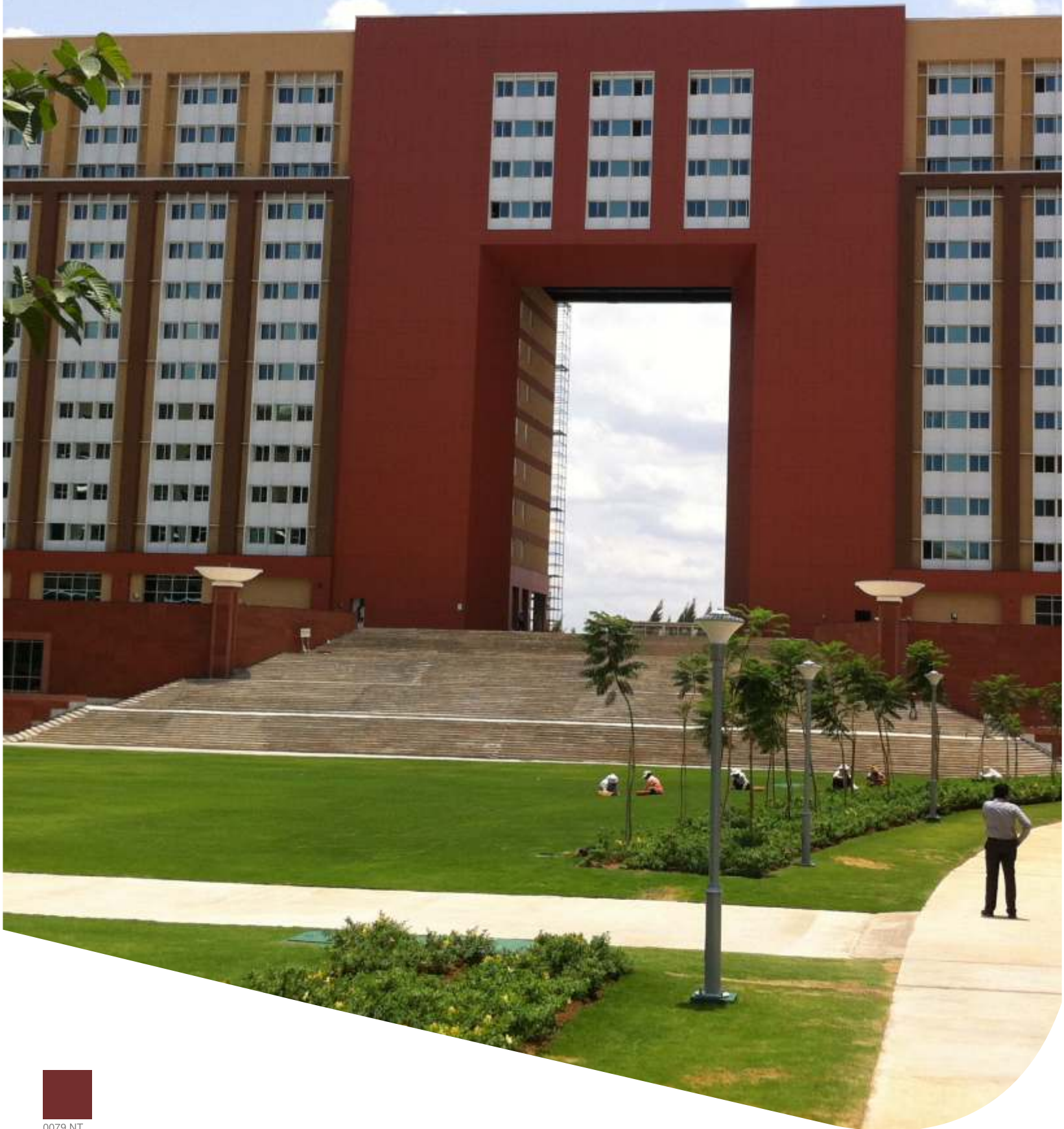
Private Residence
Bangalore

Planning: Klimart

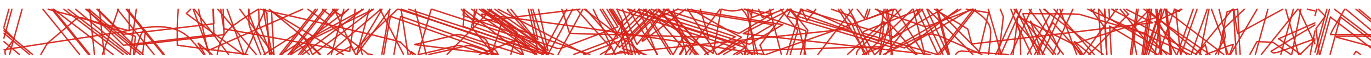


0803 NT





0079 NT

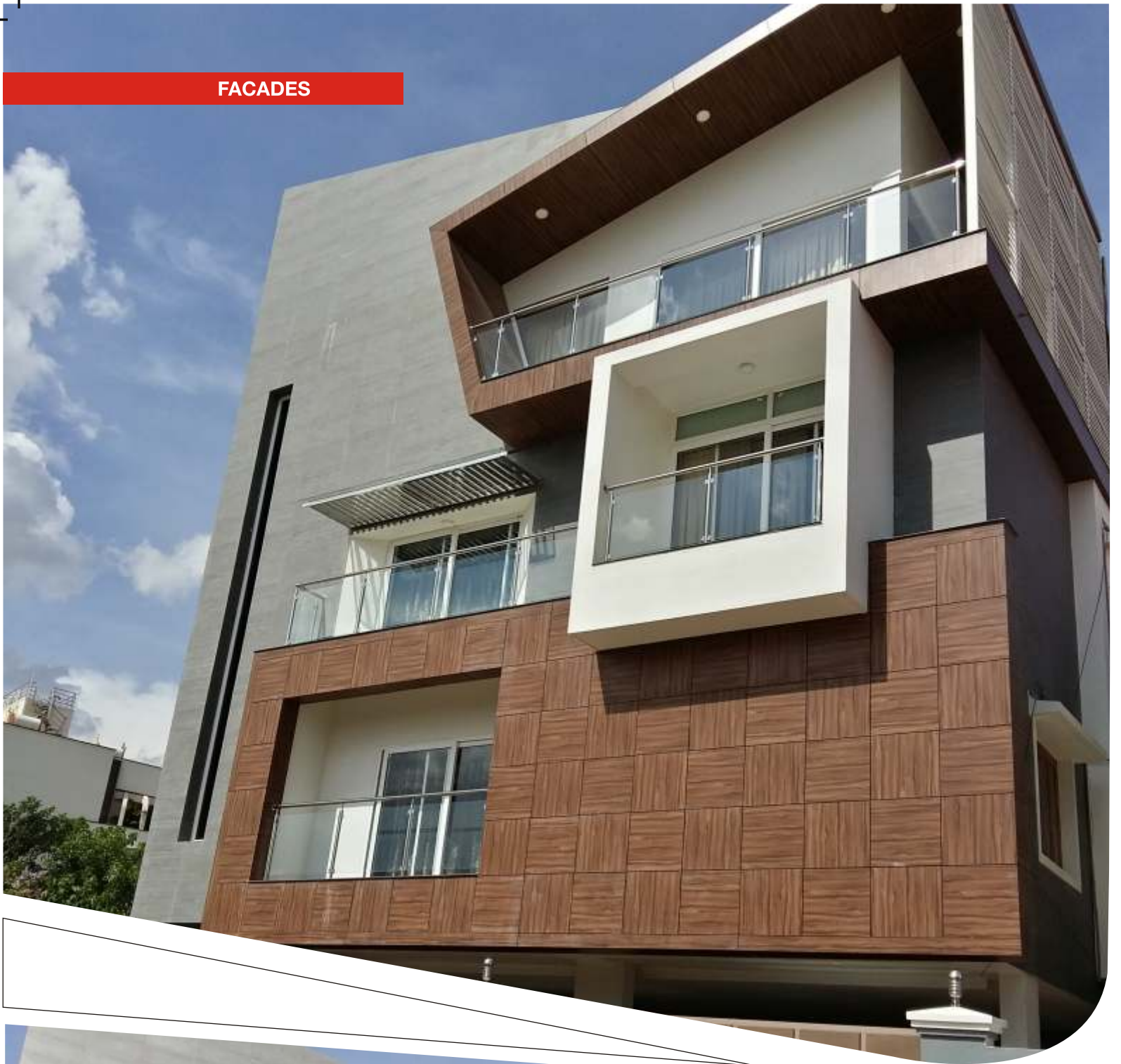




**INFOSYS SOFTWARE
DEVELOPMENT PARK**
Employee Care Centre
Hyderabad

Planning: Architect KP Nagaraj

FACADES



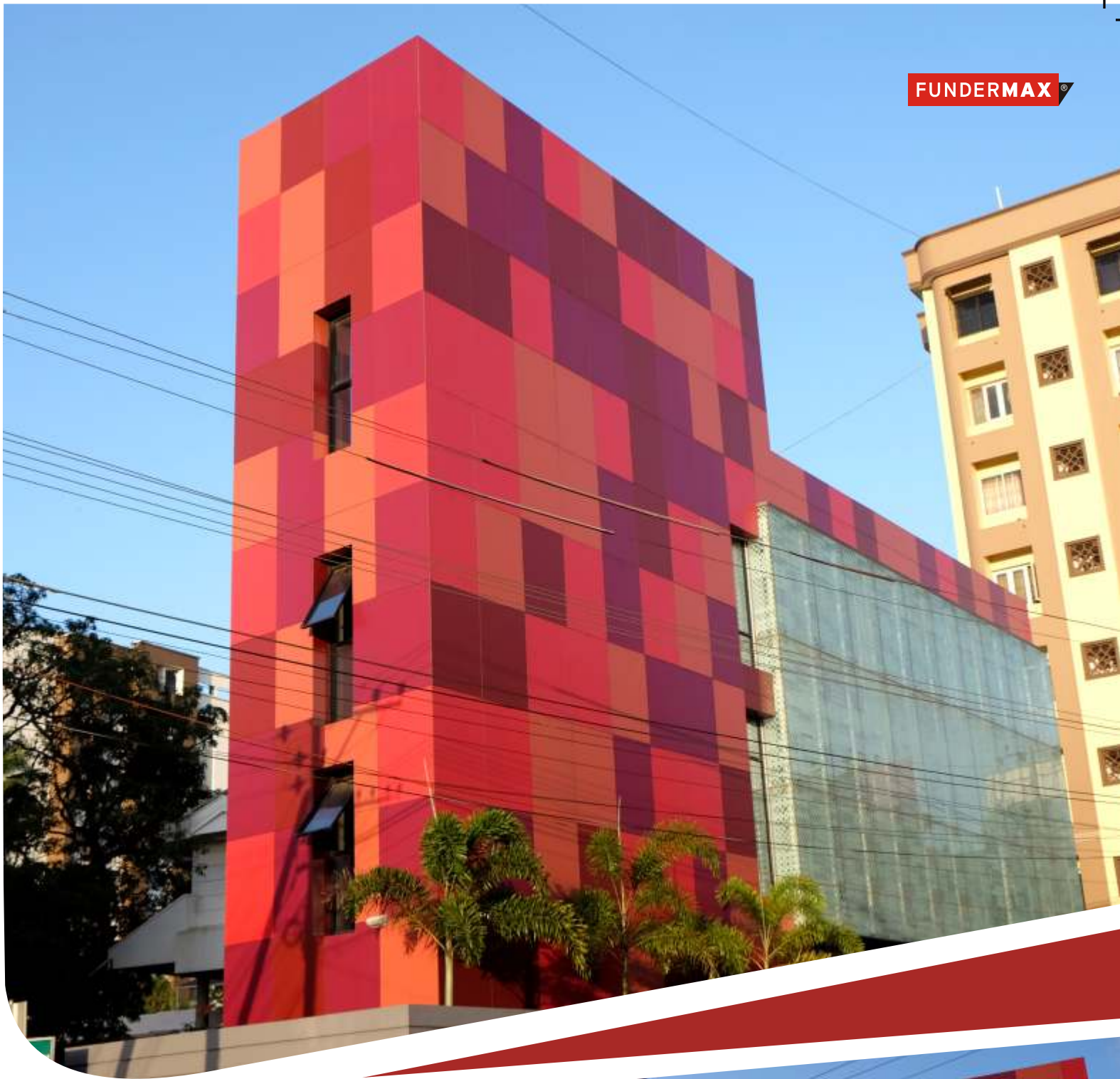
0797 NT

ABDUL HAMEED'S RESIDENCE

Private Residence
Bangalore

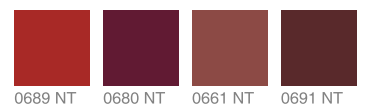
Planning: Architect Taiyyab



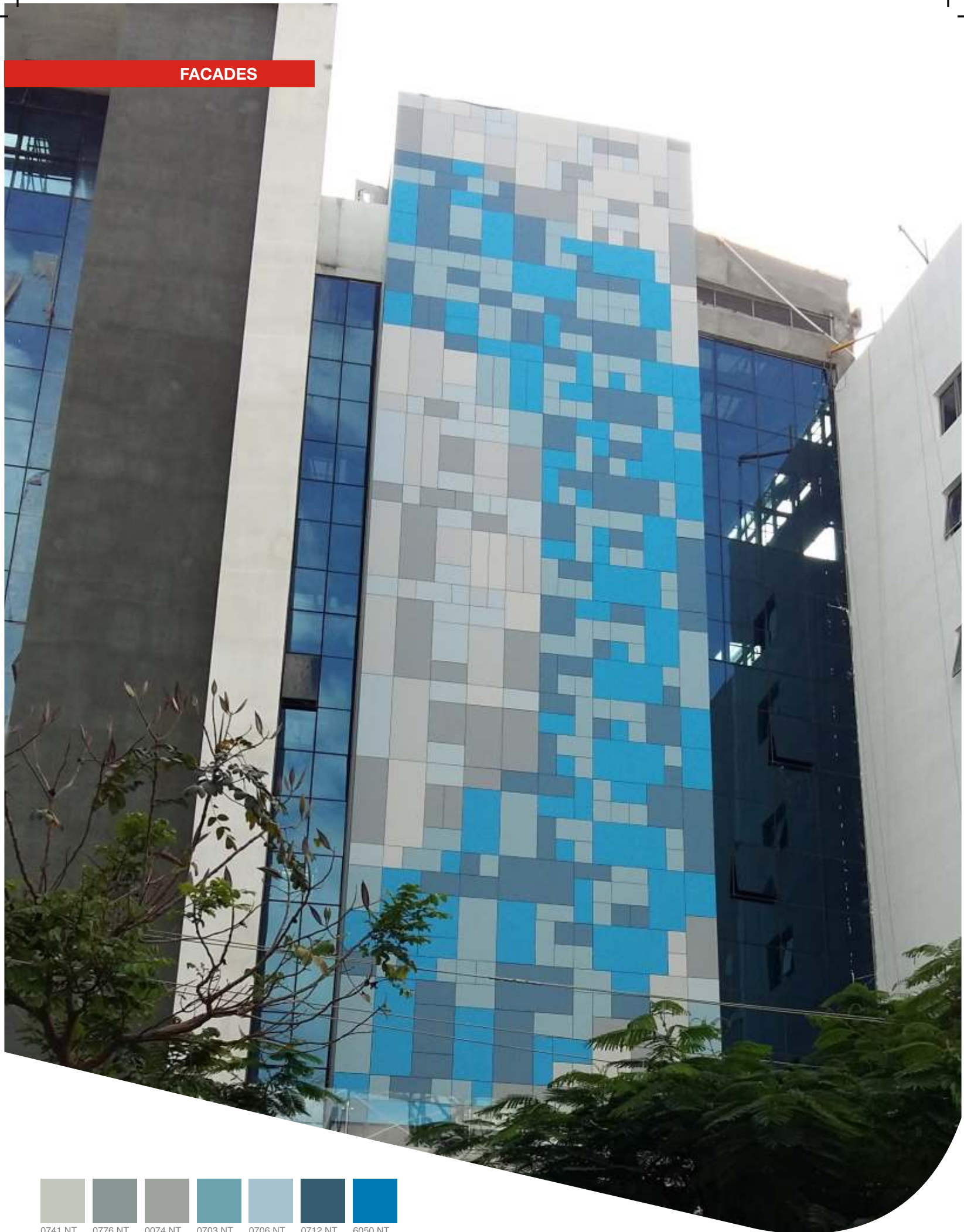


ARJUN MORA
Commercial
Mangalore

Planning: Architect Gulshan Roy



FACADES





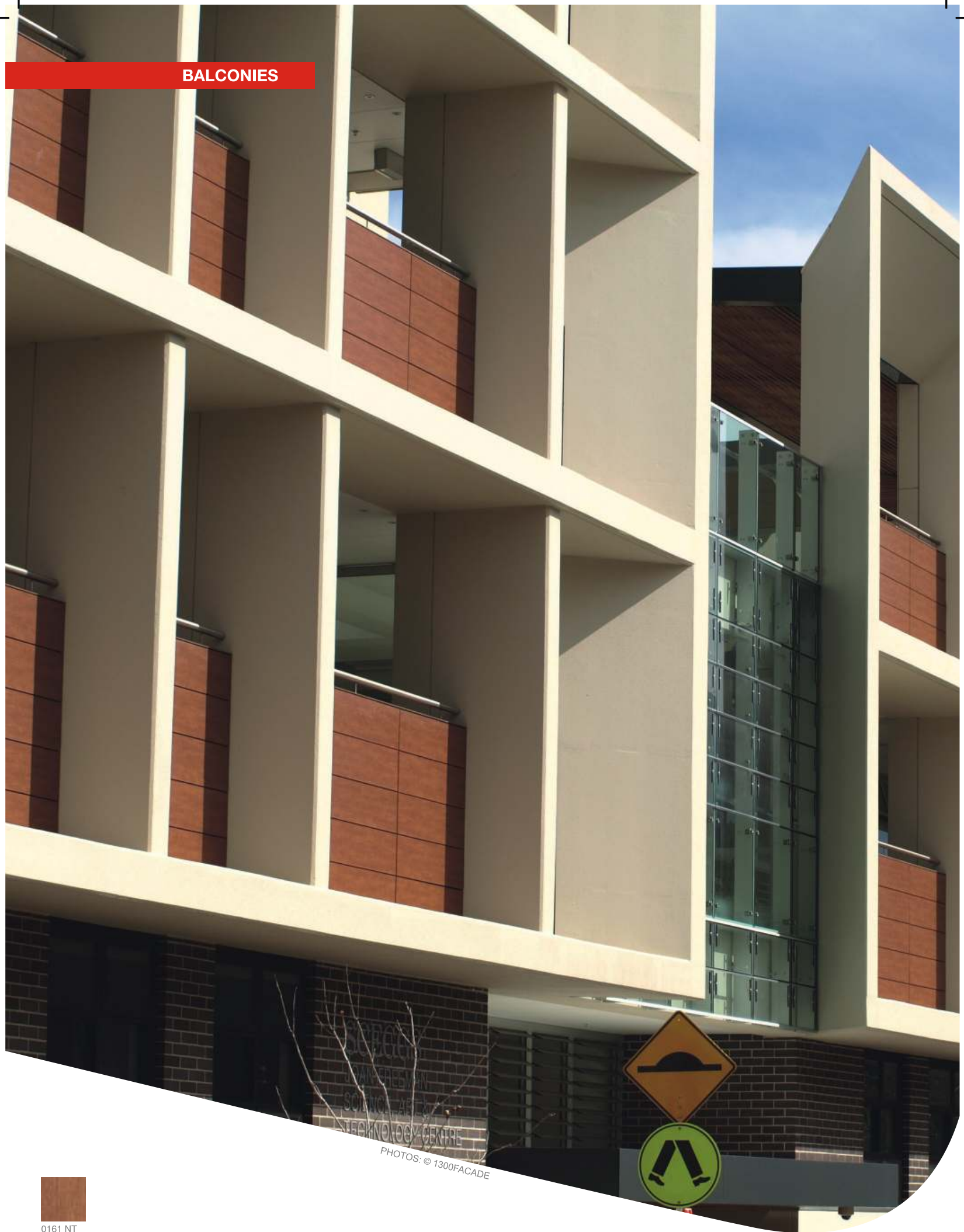
QUALCOMM

Corporate Office
Bangalore

Planning: Lateral Architectural
Services Pvt Ltd



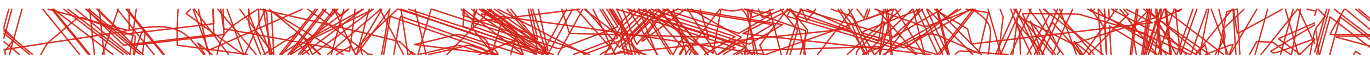
BALCONIES



PHOTOS: © 1300FACADE



0161 NT



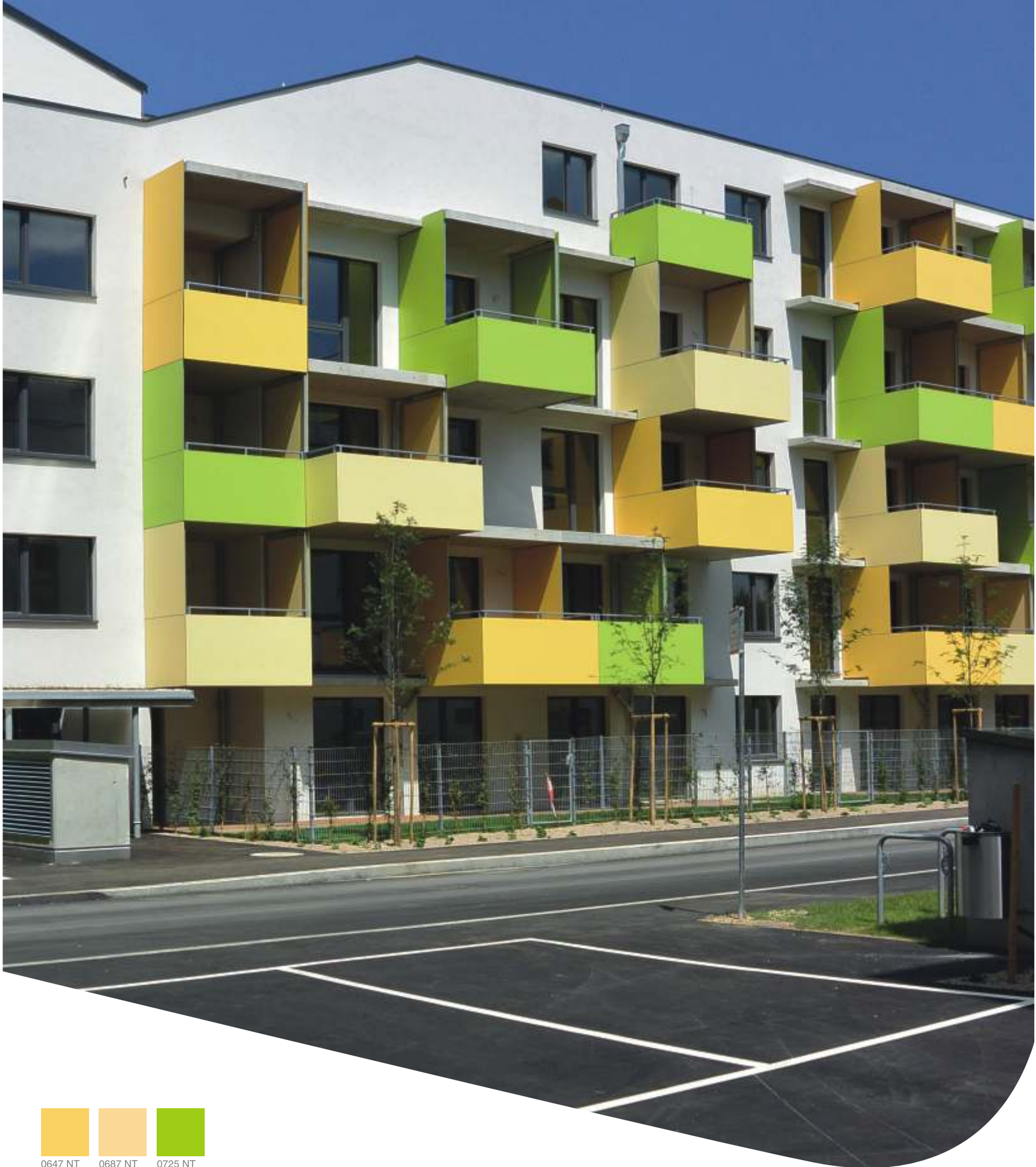


SCEGGS GIRLS HIGH

School building
Darlinghurst Sydney, Australia

Planning: Tanner Kibble,
Denton Architects

BALCONIES





PHOTOS: © LUKAS SCHALLER

PASSIVE HOUSE SYSTEM

Condominium
Vienna, Austria

Planning: Treberspurg & Partner
Architekten ZT GmbH

SUNSCREENS



**CONVERSION ENERGY EFFICIENCY
HOUSE**

Residential and commercial building
Dresden, Germany

Planning: BAUATELIER Deutscher



0162 NT





PHOTOS: © MIGUEL DE GUZMÁN



APPARTEMENTS CALLE CLAVEL

Residential building
Madrid, Spain

Planning: riaño + arquitectos



0085 NT



OUTDOOR



0085 NG



0080 NG





PHOTOS: © UR'BAIN



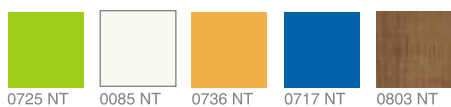
SALON AQUATIQUE INNOVANT

Jacuzzi
Toulouse, France

Planning: Ur'bain

OUTDOOR

Ti-kêr



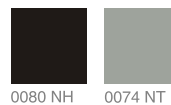
PLAYGROUNDS
France

Planning: Quali-cité



PLAYGROUND
Poland

Planning: VinciPlay



OUTDOOR



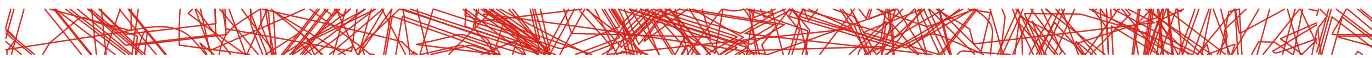
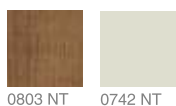
PHOTOS: © FONTASCH GMBH



**SELF SUSTAING DESIGN
BUS STOP SHELTER**

Bus stop
Winden bei Melk, Austria

Design: GP designpartners GmbH
Installer: Fonatsch GmbH



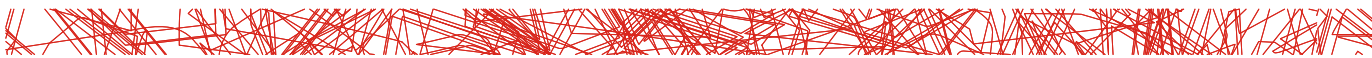
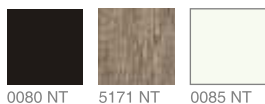


SHORE DESIGN SCHEIBBS
Outdoor-Furniture
Scheibbs, Austria

Design: DI Christian Wittmeir



0674 NT





**RESIDENZ IN
ROUXMESNIL-BOUTEILLES**

Residential building
Dieppe, France

Planning: Ulyses Design

SCALEO



0803 NT

**APARTMENT COMPLEX
CLAYE SOUILLY**

Residential building
Claye Souilly, France

Planning: DT Architecture

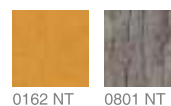




APARTMENT COMPLEX

Residential building
Reims, France

Planning: Atelier Choiseul



MODULO



PHOTOS: © DAVID BOUREAU



0070 NT 0074 NT 0717 NT





DETACHED HOUSE IN LE HAM

Detached house
Le Ham, France

HEXA



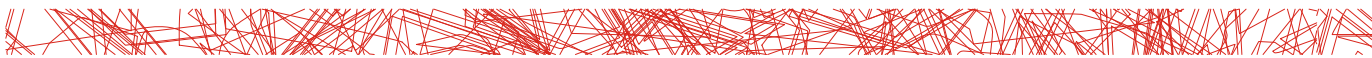
PHOTOS: © PAULO CARVALHO



SWIMMING POOL TERRACE
Portugal

Planning: Pedro Correia & Rui
Guimarães-Arquitectos

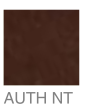
0657 NT



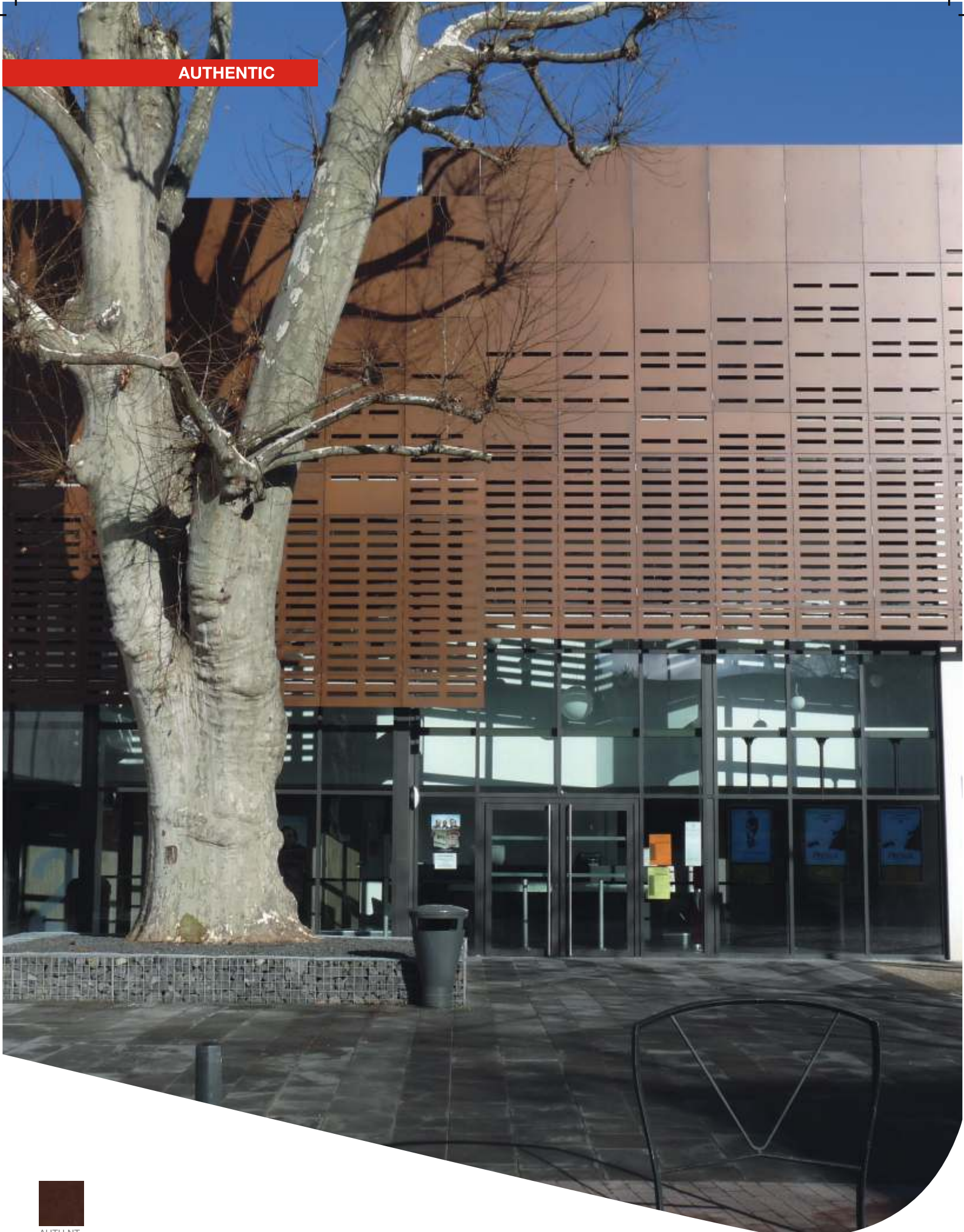


CYCLE PATH SANTA POLA
Cycle trail and viewing platform
Santa Pola, Spain

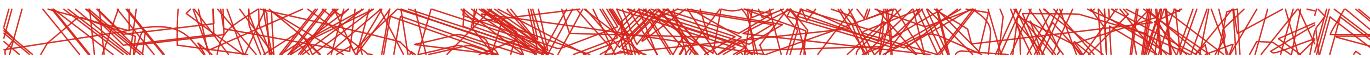
Planning: Ras architecture solutions SL



AUTHENTIC



AUTH NT





LE MODERN CINEMA

Cinema
Issoire, France

Planning: Atelier 4

AUTHENTIC



PHOTOS: © MAHORE ARCHITEKTEN



MUK

Detached house with practise
Saalfelden, Austria

Planning: mahore architekten ZT OG

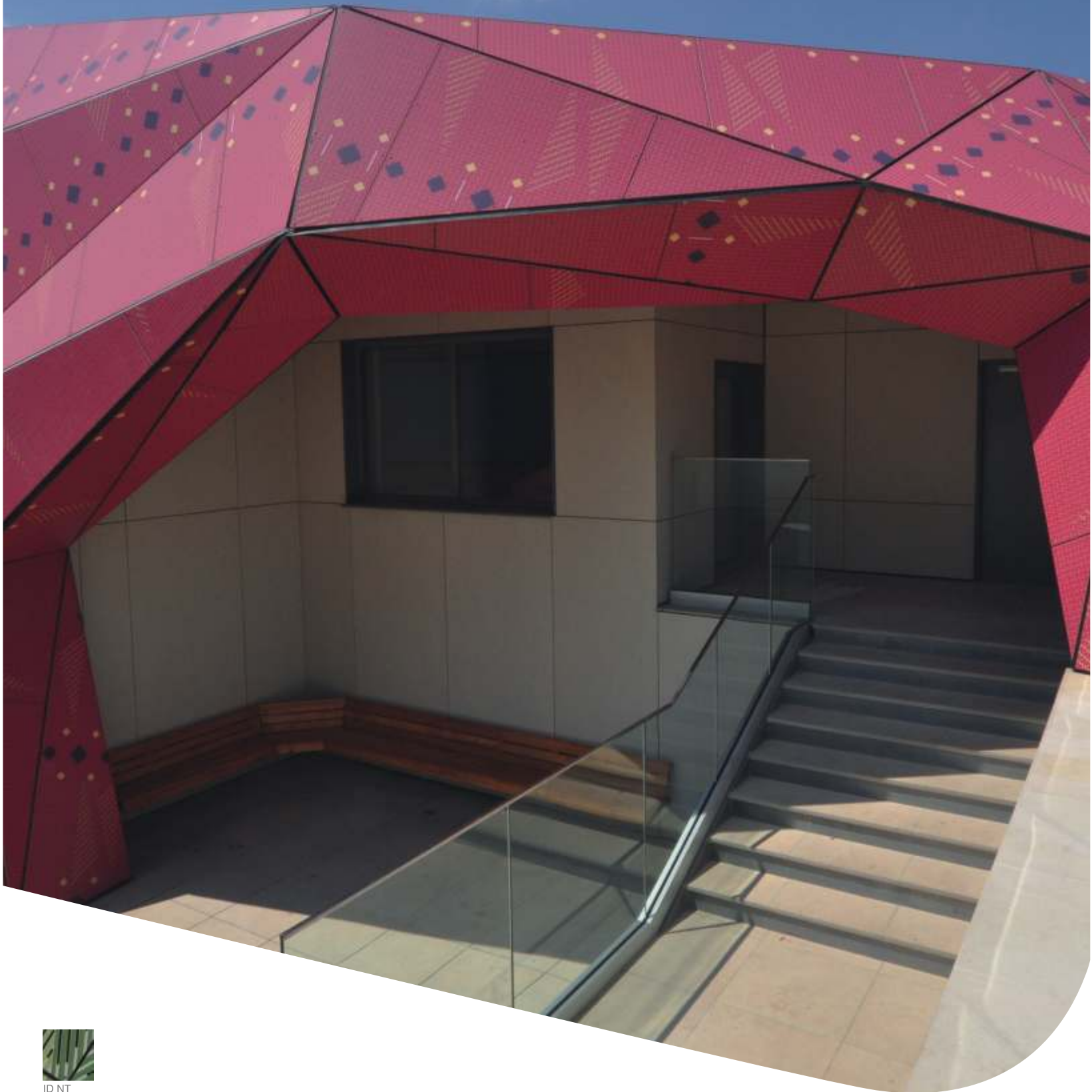
AUTH NT



COMMUNITY CENTRE
Office building
Germany

Planning: Arge4architekten





ID NT





**MUZEIKO - AMERICA FOR BULGARIA
CHILDREN'S MUSEUM**

Museum
Sofia, Bulgaria

Planning: A&A Architects

INDIVIDUALDECOR

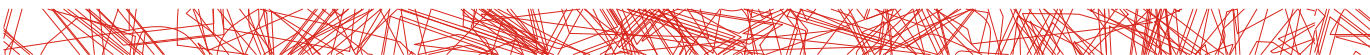


PHOTOS: © MARTIN KITZLER



KASTNER GROUP
Industrial buildings
Zwettl, Austria

Design: Martin Kitzler





HIMMELSRAHMEN

Bench, play area
Zwettl, Austria

Design: Kunst oder Gestaltung
Kropshofer, Lohinger



Max Exterior F-Quality

Max Exterior is a high quality construction product which is used especially for long lasting façade and balcony claddings. Max Exterior panels are duromer high pressure laminates (HPL) in accordance with EN 438-6 Type EDF and manufactured using patented technology (NT) with extremely effective weather protection. The panels are double hardened and use acrylic polyurethane resin which imparts extremely effective weather protection and is thermally cured under great pressure and at high temperatures in lamination presses. Max Exterior panels are labeled with the CE mark necessary for their use in building applications.

NT: Non Fading High Performance Acrylic Polyurethane Surface Technology

SURFACES

NT	
NH (Hexa)/NT	(format 4100 x 1854 mm only)
NG (Gloss)	(format 4100 x 1300 mm only)
NY (SKY)/NT	(format 4100 x 1300 mm, limited decor palette)

FORMATS (aprox)

2800 x 1300 = 3,64 m ²	2800 x 1854 = 5,19 m ²
4100 x 1300 = 5,33 m ²	4100 x 1854 = 7,60 m ²

INSTALLATION

Supply and installation of Max Exterior panels will be done by FunderMax or FunderMax Authorized Business Partners.

Installation of Max Exterior panels will be done as per the Rear Ventilated Façade System only which is ensured by providing gaps of minimum 200 cm²/ meter (for free flow of air behind the façade) for the façade and using the framework with no horizontal section. The installation will be done by using MBE Rivets (with fixed and sliding points) or Dow Corning 896 silicone adhesive with recommended L and T sections and wall brackets with wind load and dead load slot as per design, anchored by standard Hilti/Fischer or equivalent make anchor fasteners along with thermal separators.

CORE

F-Quality, flame-retardant, colour brown

THICKNESSES

Panels with double-sided decor:

Thicknesses	Tolerances (EN 438-6, 5.3)
4,0 - 4,9 mm	± 0,3 mm
5,0 - 7,9 mm	± 0,4 mm
8,0 - 11,9 mm	± 0,5 mm
12,0 - 13,0 mm	± 0,6 mm

Higher thicknesses on request in standard quality, Format XL.

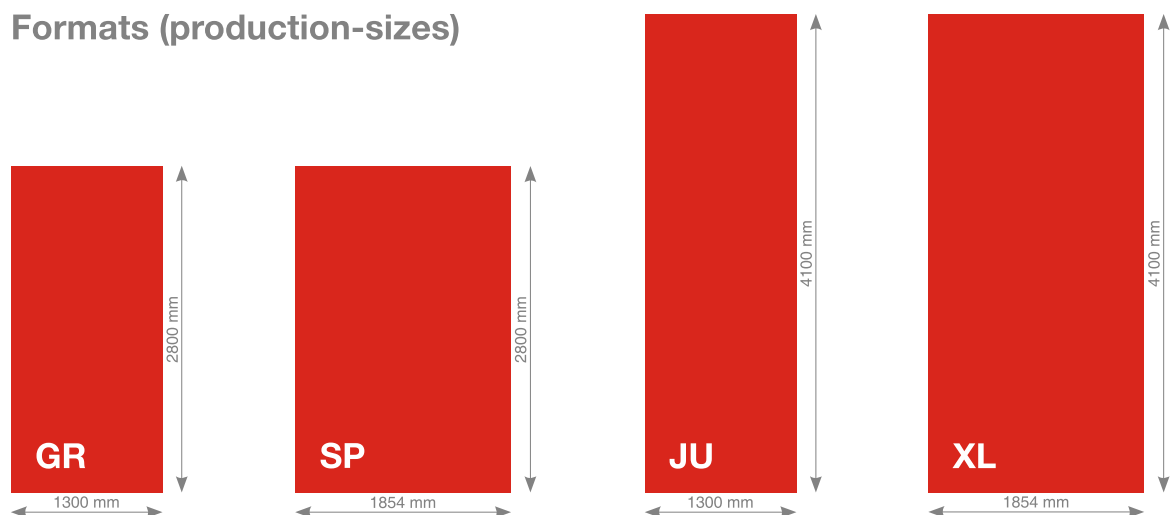
Panels with sanded-reverse side:

For symmetrically structured sandwich elements.

Thicknesses	Tolerances (EN 438-6, 5.3)
2,0 - 2,9 mm	± 0,2 mm
3,0 - 4,0 mm	± 0,3 mm

In order to be able to design the inner sides of balconies with a uniformly light look, it is also possible to produce Max Exterior panels with a white (rear) side using decor 0890 NT – Balcony white. As a result of the differing decor structure, the fastening spacings given in our Technical Information brochures should be reduced by about 15 %.

Formats (production-sizes)



TOLERANCES +10 - 0 mm (EN 438-6, 5.3)
 PANEL FORMATS ARE PRODUCTION FORMATS. IF EXACT DIMENSIONS AND ANGLES ARE NECESSARY, WE RECOMMEND AN ALL-SIDED BLANK. DEPENDING ON THE METHOD OF TRIMMING, NET SIZE IS REDUCED BY CA. 10mm.

What Max Exterior can do



EXTREMELY
WEATHER RESISTANT



OPTIMAL
LIGHT-FASTNESS



DOUBLE HARDENED



SCRATCH
RESISTANT



SOLVENT RESISTANT



EASY TO CLEAN



IMPACT
RESISTANT



EASY TO INSTALL



PROPERTIES*:

- Weather resistant to EN ISO 4892-2
- lightfast acc. to EN ISO 4892-3
- Double hardened
- Scratch resistant
- Solvent resistant
- Hail resistant
- Easy to clean
- Impact resistant EN ISO 178
- Suitable for all exterior applications
- Decorative
- Self-supporting
- Bending resistant EN ISO 178
- Frost resistant -80°C to 180°C (DMTA- OFI 300.128)
- Heat resistant -80°C to 180°C (DMTA- OFI 300.128)
- Easy to install

STANDARD- AND ACTUAL-VALUES YOU WILL FIND ON
OUR WEBSITE WWW.FUNDERMAX.AT.

FUNDERMAX FRANCE
3 Cours Albert Thomas
F-69003 Lyon
Tel.: + 33 (0) 4 78 68 28 31
Fax: + 33 (0) 4 78 85 18 56
infofrance@fundermax.biz
www.fundermax.fr

FUNDERMAX SPAIN
Pol. Ind. Can Salvatella Avda. Salvatella, 85-97
E-08210 Barberà del Vallès (Barcelona)
Tel.: + 34 93 729 63 45
Fax: + 34 93 729 63 46
info.spain@fundermax.biz
www.fundermax.es

FUNDERMAX INDIA Pvt. Ltd.
No. 13, 1st floor, 13th Cross
Wilson Garden
Bangalore – 560 027
Tel.: + 91 80 4661 7000
officeindia@fundermax.biz
www.fundermax.in

FUNDERMAX POLSKA Sp. z o.o.
ul. Rybitwy 12
PL-30 722 Kraków
Tel.: + 48 12 653 45 28
Fax: + 48 12 657 05 45
infopoland@fundermax.biz

FUNDERMAX SWISS AG
Industriestrasse 38
CH-5314 Kleindöttingen
Tel.: +41 56 268 83 11
Fax: +41 56 268 83 10
infoswiss@fundermax.biz
www.fundermax.ch

FUNDERMAX NORTH AMERICA INC.
2015 Ayrshire Town Blvd.
Suite 202
Charlotte, NC 28273, USA
Tel.: +1 980 299 0035
Fax: +1 704 280 8301
office.america@fundermax.biz

FunderMax GmbH

Klagenfurter Straße 87-89, A-9300 St. Veit/Glan
T +43 (0) 5/9494-0, F +43 (0) 5/9494-4200
office@fundermax.at, www.fundermax.at